

# MY ML SERIES

SINGLE PHASE TEFC ALUMINIUM  
INDUCTION MOTORS



These motors are single phase aluminium motors.

MY is capacitor run series which is mainly used for low start torque application such as fans and pumps.

ML is dual capacitors series. This series comes with centrifugal switch, which is suitable for high start torque application such as air compressor.

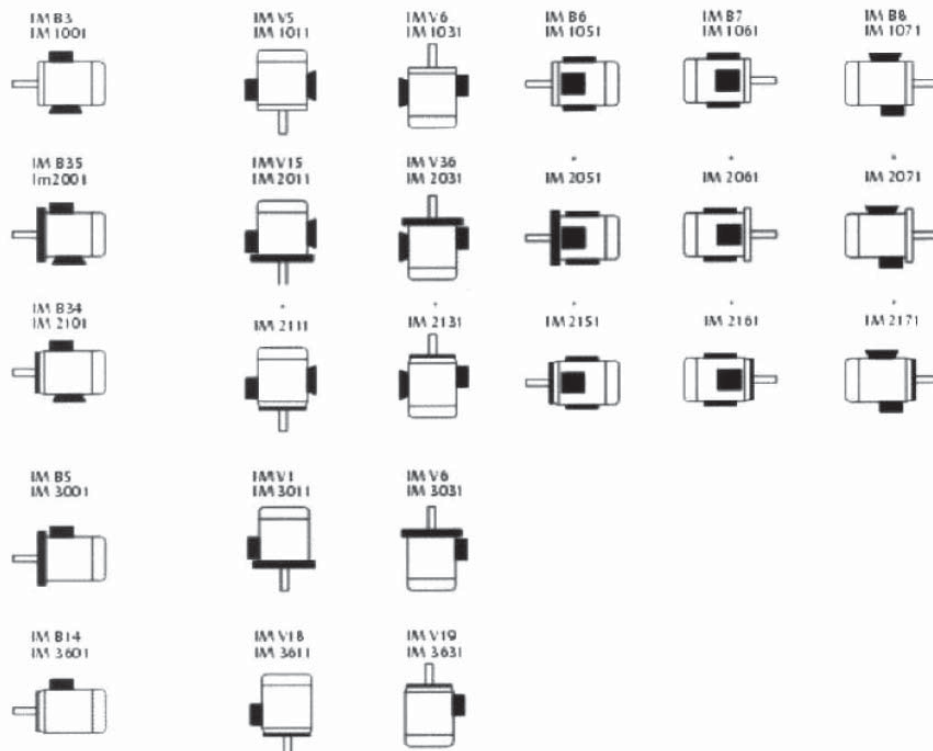
### Characteristics for all WONDER standard 3-Phase asynchronous motors

- Widely applied in general machinery and industries such as pumps & water treatment, road machinery, petroleum, chemical, metallurgy, cement and paper-milling.
- IP55 protection, Class F Insulation, B Temperature rise, S1 duty
- Rated voltage 220V, 230V, 240V
- Rated frequency 50Hz
- Operation conditions: ambient temperature: -20°C ~ 40°C, altitude ≤ 1000m
- Other voltage and 60Hz frequency available upon request
- Cooling method is IC411

## MOUNTING ARRANGEMENTS

Basic Type  
of Construction

Derived Types of Construction



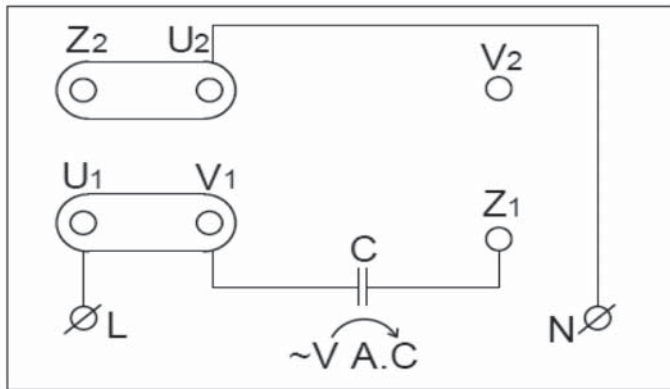
basics types of construction may be used in all derived types of construction

(\*) non-defined mounting by IEC 60034-7

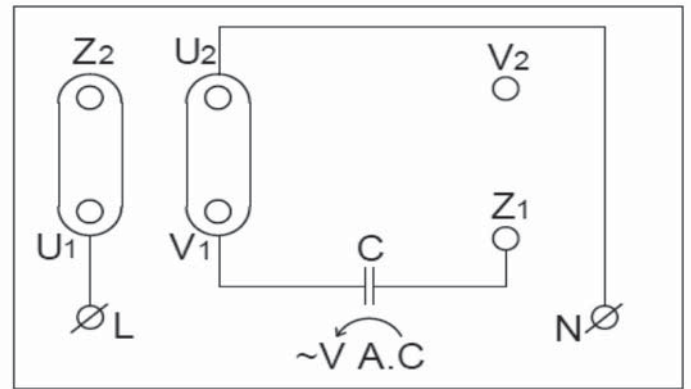
1) for IM V6, IM B6, IM B8 types of construction, inquiry is necessary.

## CONNECTION DIAGRAM, BEARINGS AND OIL SEAL - MY ML SERIES

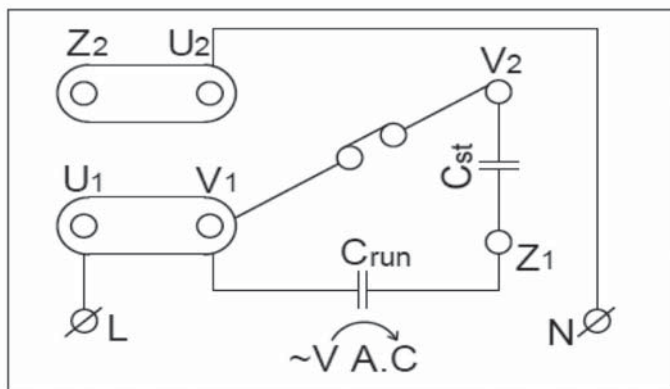
### CONNECTION DIAGRAM



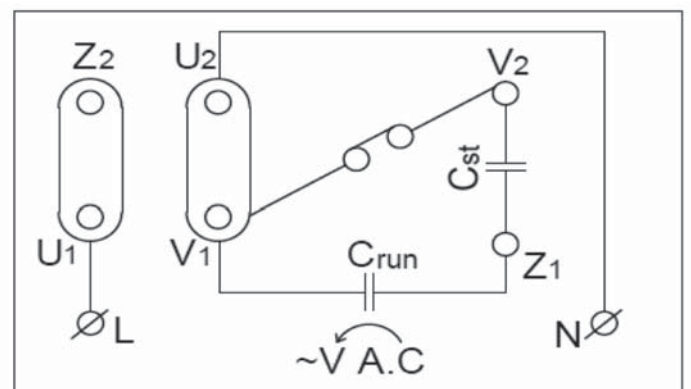
MY - CLOCKWISE DIRECTION



MY - ANTICLOCKWISE DIRECTION



ML - CLOCKWISE DIRECTION



ML - ANTICLOCKWISE DIRECTION

Note: The rotational direction indicated is from the point of view of the shaft extension end.

Ensure that the wiring connections are correct before the motor is started. The motor can only be started when the wiring connections are made in accordance with the above wiring diagram which is also given on the terminal box. If you like to vary rotational direction of the motor, you may refer to the above wiring diagram for different ways of connection which effects the relevant rotational direction change.

### BEARINGS AND OIL SEAL - MY ML SERIES

| Frame Size | Driving End bearings | Non-driving End Bearings | Oil Seal      |
|------------|----------------------|--------------------------|---------------|
| 56         | 6201 2RS/C3          | 6201 2RS/C3              | φ12 X φ22 X 5 |
| 63         | 6201 2RS/C3          | 6201 2RS/C3              | φ12 X φ22 X 7 |
| 71         | 6202 2RS/C3          | 6202 2RS/C3              | φ15 X φ25 X 7 |
| 80         | 6204 2RS/C3          | 6204 2RS/C3              | φ20 X φ30 X 7 |
| 90         | 6205 2RS/C3          | 6205 2RS/C3              | φ25 X φ37 X 7 |
| 100        | 6206 2RS/C3          | 6206 2RS/C3              | φ30 X φ42 X 7 |
| 112        | 6206 2RS/C3          | 6206 2RS/C3              | φ30 X φ42 X 7 |

# TECHNICAL SPECIFICATIONS - MY SERIES (50Hz)

| Motor Type          | Output | Rated Speed | Current (IFL) /A |       |       | Full-load Power Factor | Full Load Efficiency | IST/ IFL | TST/ TFL | TM/ TFL | TFL   | Running Capacitor (450V) | Weight |
|---------------------|--------|-------------|------------------|-------|-------|------------------------|----------------------|----------|----------|---------|-------|--------------------------|--------|
|                     | KW     | r/min       | 220V             | 230V  | 240V  | cosφ                   | %                    | Ratio    |          |         | N.M   | μF                       | Kg     |
| <b>2 POLES 50Hz</b> |        |             |                  |       |       |                        |                      |          |          |         |       |                          |        |
| MY5612              | 0.09   | 2730        | 0.79             | 0.75  | 0.72  | 0.92                   | 56                   | 3.2      | 0.50     | 1.7     | 0.31  | 6                        | 3.2    |
| MY5622              | 0.12   | 2730        | 0.99             | 0.94  | 0.91  | 0.92                   | 60                   | 3.5      | 0.50     | 1.7     | 0.42  | 6                        | 3.4    |
| MY6312              | 0.18   | 2740        | 1.37             | 1.31  | 1.25  | 0.92                   | 65                   | 3.7      | 0.40     | 1.7     | 0.63  | 6                        | 3.9    |
| MY6322              | 0.25   | 2740        | 1.87             | 1.78  | 1.71  | 0.92                   | 66                   | 3.7      | 0.40     | 1.7     | 0.87  | 8                        | 4.4    |
| MY7112              | 0.37   | 2750        | 2.73             | 2.61  | 2.50  | 0.92                   | 67                   | 3.7      | 0.35     | 1.7     | 1.28  | 12                       | 6.2    |
| MY7122              | 0.55   | 2760        | 3.90             | 3.73  | 3.60  | 0.92                   | 70                   | 3.9      | 0.35     | 1.7     | 1.90  | 16                       | 6.3    |
| MY8012              | 0.75   | 2780        | 5.20             | 4.97  | 4.80  | 0.92                   | 72                   | 3.9      | 0.33     | 1.7     | 2.58  | 30                       | 8.3    |
| MY8022              | 1.1    | 2790        | 7.02             | 6.71  | 6.43  | 0.95                   | 75                   | 4.3      | 0.33     | 1.7     | 3.77  | 35                       | 9.0    |
| MY90S-2             | 1.5    | 2800        | 9.50             | 9.09  | 8.70  | 0.95                   | 76                   | 4.8      | 0.30     | 1.7     | 5.12  | 40                       | 13.0   |
| MY90L-2             | 2.2    | 2800        | 13.70            | 13.10 | 12.60 | 0.95                   | 77                   | 4.8      | 0.30     | 1.7     | 7.50  | 40                       | 15.0   |
| <b>4 POLES 50Hz</b> |        |             |                  |       |       |                        |                      |          |          |         |       |                          |        |
| MY5614              | 0.06   | 1330        | 0.61             | 0.58  | 0.56  | 0.9                    | 50                   | 3.3      | 0.45     | 1.7     | 0.43  | 6                        | 3.2    |
| MY5624              | 0.09   | 1340        | 0.87             | 0.83  | 0.79  | 0.9                    | 52                   | 2.9      | 0.45     | 1.7     | 0.64  | 6                        | 3.4    |
| MY6314              | 0.12   | 1350        | 1.06             | 1.01  | 0.97  | 0.9                    | 57                   | 3.2      | 0.40     | 1.7     | 0.85  | 6                        | 4.0    |
| MY6324              | 0.18   | 1360        | 1.54             | 1.47  | 1.41  | 0.9                    | 59                   | 3.3      | 0.40     | 1.7     | 1.26  | 8                        | 4.5    |
| MY7114              | 0.25   | 1370        | 2.02             | 1.93  | 1.85  | 0.92                   | 61                   | 3.4      | 0.35     | 1.7     | 1.74  | 12                       | 6.1    |
| MY7124              | 0.37   | 1370        | 2.95             | 2.82  | 2.70  | 0.92                   | 62                   | 3.4      | 0.35     | 1.7     | 2.58  | 16                       | 7.0    |
| MY8014              | 0.55   | 1380        | 4.30             | 4.11  | 3.94  | 0.92                   | 64                   | 3.5      | 0.35     | 1.7     | 3.81  | 25                       | 9.5    |
| MY8024              | 0.75   | 1380        | 5.45             | 5.21  | 4.99  | 0.92                   | 68                   | 3.7      | 0.32     | 1.7     | 5.19  | 30                       | 10.0   |
| MY90S-4             | 1.1    | 1390        | 7.41             | 7.08  | 6.79  | 0.95                   | 71                   | 4        | 0.32     | 1.7     | 7.56  | 40                       | 13.0   |
| MY90L-4             | 1.5    | 1400        | 9.85             | 9.40  | 9.01  | 0.95                   | 73                   | 4.6      | 0.30     | 1.7     | 10.23 | 40                       | 16.0   |
| MY100L-4            | 2.2    | 1360        | 13.60            | 13.00 | 12.80 | 0.98                   | 72                   | 4.7      | 0.30     | 1.7     | 15.45 | 70                       | 19.2   |
| <b>6 POLES 50Hz</b> |        |             |                  |       |       |                        |                      |          |          |         |       |                          |        |
| MY7116              | 0.18   | 820         | 1.5              | 1.43  | 1.37  | 0.87                   | 64                   | 2.6      | 0.94     | 1.7     | 2.10  | 8                        | 6.4    |
| MY7126              | 0.25   | 820         | 2.5              | 2.4   | 2.3   | 0.93                   | 57                   | 2        | 0.89     | 1.7     | 2.91  | 10                       | 6.5    |
| MY8016              | 0.37   | 830         | 2.73             | 2.61  | 2.51  | 0.95                   | 64                   | 2.4      | 0.28     | 1.2     | 4.26  | 12                       | 8.5    |
| MY8026              | 0.55   | 830         | 4.18             | 4     | 3.83  | 0.99                   | 59                   | 2.26     | 0.35     | 1.2     | 6.33  | 16                       | 9.2    |
| MY90S-6             | 0.75   | 860         | 5.5              | 5.2   | 5     | 0.93                   | 67                   | 1.7      | 0.72     | 1.2     | 8.33  | 25                       | 12     |
| MY90L-6             | 1.1    | 870         | 7.7              | 7.3   | 7     | 0.94                   | 69                   | 2.55     | 0.34     | 1.3     | 12.07 | 35                       | 14     |

\* Defined by Wonder  
All values of current indicated have a tolerance level of ± 3%

IST = Locked Rotor Current  
IFL = Full Load Current  
TM = Maximum Torque  
TFL = Full Load Torque  
TST = Locked Rotor Torque

## TECHNICAL SPECIFICATIONS - MY SERIES (60Hz)

| Motor Type          | Output | Rated Speed | Current (IFL) /A |       |       | Full-load Power Factor | Full Load Efficiency | IST/ IFL | TST/ TFL | TM/ TFL | TFL   | Running Capacitor (450V) | Weight |
|---------------------|--------|-------------|------------------|-------|-------|------------------------|----------------------|----------|----------|---------|-------|--------------------------|--------|
|                     | KW     | r/min       | 220V             | 230V  | 240V  | cosφ                   | %                    | Ratio    |          |         | N.M   | μF                       | Kg     |
| <b>2 POLES 60Hz</b> |        |             |                  |       |       |                        |                      |          |          |         |       |                          |        |
| MY5612              | 0.09   | 3276        | 0.79             | 0.75  | 0.72  | 0.92                   | 56                   | 3.2      | 0.50     | 1.7     | 0.26  | 6                        | 3.2    |
| MY5622              | 0.12   | 3276        | 0.99             | 0.94  | 0.91  | 0.92                   | 60                   | 3.5      | 0.50     | 1.7     | 0.35  | 6                        | 3.4    |
| MY6312              | 0.18   | 3288        | 1.37             | 1.31  | 1.25  | 0.92                   | 65                   | 3.7      | 0.40     | 1.7     | 0.52  | 6                        | 3.9    |
| MY6322              | 0.25   | 3288        | 1.87             | 1.78  | 1.71  | 0.92                   | 66                   | 3.7      | 0.40     | 1.7     | 0.73  | 8                        | 4.4    |
| MY7112              | 0.37   | 3300        | 2.73             | 2.61  | 2.50  | 0.92                   | 67                   | 3.7      | 0.35     | 1.7     | 1.07  | 12                       | 6.2    |
| MY7122              | 0.55   | 3312        | 3.90             | 3.73  | 3.60  | 0.92                   | 70                   | 3.9      | 0.35     | 1.7     | 1.59  | 16                       | 6.3    |
| MY8012              | 0.75   | 3336        | 5.20             | 4.97  | 4.80  | 0.92                   | 72                   | 3.9      | 0.33     | 1.7     | 2.15  | 30                       | 8.3    |
| MY8022              | 1.1    | 3348        | 7.02             | 6.71  | 6.43  | 0.95                   | 75                   | 4.3      | 0.33     | 1.7     | 3.14  | 35                       | 9.0    |
| MY90S-2             | 1.5    | 3360        | 9.50             | 9.09  | 8.70  | 0.95                   | 76                   | 4.8      | 0.30     | 1.7     | 4.26  | 40                       | 13.0   |
| MY90L-2             | 2.2    | 3360        | 13.70            | 13.10 | 12.60 | 0.95                   | 77                   | 4.8      | 0.30     | 1.7     | 6.25  | 40                       | 15.0   |
| <b>4 POLES 60Hz</b> |        |             |                  |       |       |                        |                      |          |          |         |       |                          |        |
| MY5614              | 0.06   | 1596        | 0.61             | 0.58  | 0.56  | 0.9                    | 50                   | 3.3      | 0.45     | 1.7     | 0.36  | 6                        | 3.2    |
| MY5624              | 0.09   | 1608        | 0.87             | 0.83  | 0.79  | 0.9                    | 52                   | 2.9      | 0.45     | 1.7     | 0.53  | 6                        | 3.4    |
| MY6314              | 0.12   | 1620        | 1.06             | 1.01  | 0.97  | 0.9                    | 57                   | 3.2      | 0.40     | 1.7     | 0.71  | 6                        | 4.0    |
| MY6324              | 0.18   | 1632        | 1.54             | 1.47  | 1.41  | 0.9                    | 59                   | 3.3      | 0.40     | 1.7     | 1.05  | 8                        | 4.5    |
| MY7114              | 0.25   | 1644        | 2.02             | 1.93  | 1.85  | 0.92                   | 61                   | 3.4      | 0.35     | 1.7     | 1.45  | 12                       | 6.1    |
| MY7124              | 0.37   | 1644        | 2.95             | 2.82  | 2.70  | 0.92                   | 62                   | 3.4      | 0.35     | 1.7     | 2.15  | 16                       | 7.0    |
| MY8014              | 0.55   | 1656        | 4.30             | 4.11  | 3.94  | 0.92                   | 64                   | 3.5      | 0.35     | 1.7     | 3.17  | 25                       | 9.5    |
| MY8024              | 0.75   | 1656        | 5.45             | 5.21  | 4.99  | 0.92                   | 68                   | 3.7      | 0.32     | 1.7     | 4.33  | 30                       | 10.0   |
| MY90S-4             | 1.1    | 1668        | 7.41             | 7.08  | 6.79  | 0.95                   | 71                   | 4        | 0.32     | 1.7     | 6.30  | 40                       | 13.0   |
| MY90L-4             | 1.5    | 1680        | 9.85             | 9.40  | 9.01  | 0.95                   | 73                   | 4.6      | 0.30     | 1.7     | 8.53  | 40                       | 16.0   |
| MY100L-4            | 2.2    | 1632        | 13.60            | 13.00 | 12.80 | 0.98                   | 72                   | 4.7      | 0.30     | 1.7     | 12.87 | 70                       | 19.2   |
| <b>6 POLES 60Hz</b> |        |             |                  |       |       |                        |                      |          |          |         |       |                          |        |
| MY7116              | 0.18   | 984         | 1.5              | 1.43  | 1.37  | 0.87                   | 64                   | 2.6      | 0.94     | 1.7     | 1.75  | 8                        | 6.4    |
| MY7126              | 0.25   | 984         | 2.5              | 2.4   | 2.3   | 0.93                   | 57                   | 2        | 0.89     | 1.7     | 2.43  | 10                       | 6.5    |
| MY8016              | 0.37   | 996         | 2.73             | 2.61  | 2.51  | 0.95                   | 64                   | 2.4      | 0.28     | 1.2     | 3.55  | 12                       | 8.5    |
| MY8026              | 0.55   | 996         | 4.18             | 4     | 3.83  | 0.99                   | 59                   | 2.26     | 0.35     | 1.2     | 5.27  | 16                       | 9.2    |
| MY90S-6             | 0.75   | 1032        | 5.5              | 5.2   | 5     | 0.93                   | 67                   | 1.7      | 0.72     | 1.2     | 6.94  | 25                       | 12     |
| MY90L-6             | 1.1    | 1044        | 7.7              | 7.3   | 7     | 0.94                   | 69                   | 2.55     | 0.34     | 1.3     | 10.06 | 35                       | 14     |

\* Defined by Wonder

All values of current indicated have a tolerance level of  $\pm 3\%$

IST = Locked Rotor Current

IFL = Full Load Current

TM = Maximum Torque

TFL = Full Load Torque

TST = Locked Rotor Torque

## TECHNICAL SPECIFICATIONS - ML SERIES (50Hz)

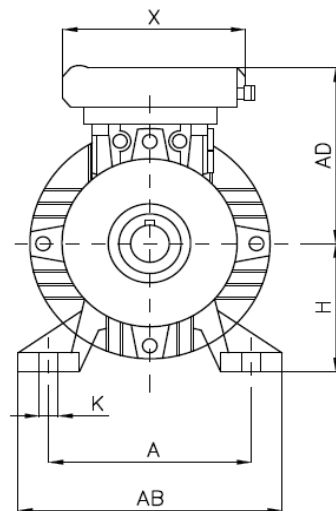
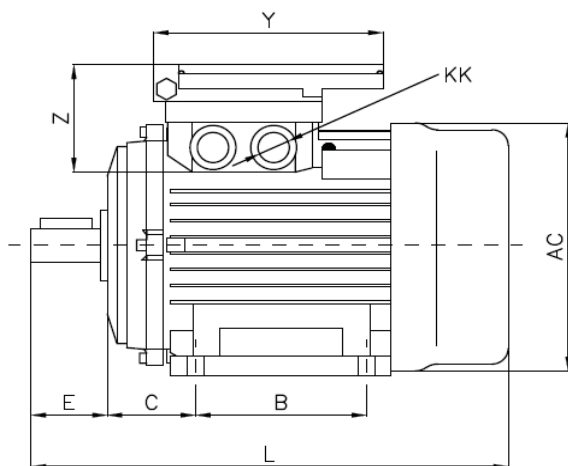
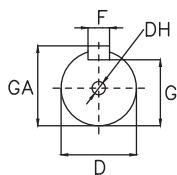
| Motor Type          | Output | Rated Speed | Current (IFL) /A |       |       | Full-load Power Factor | Full Load Efficiency | IST/ IFL | TST/ TFL | TM/ TFL | TFL   | Capacitor          |                   | Weight |
|---------------------|--------|-------------|------------------|-------|-------|------------------------|----------------------|----------|----------|---------|-------|--------------------|-------------------|--------|
|                     | KW     | r/min       | 220V             | 230V  | 240V  | cosφ                   | %                    | Ratio    |          |         | N.M   | Starting (250V) μF | Running (450V) μF | Kg     |
| <b>2 POLES 50Hz</b> |        |             |                  |       |       |                        |                      |          |          |         |       |                    |                   |        |
| ML7112              | 0.37   | 2750        | 2.73             | 2.61  | 2.50  | 0.92                   | 67                   | 5.2      | 1.8      | 1.7     | 1.28  | 75                 | 10.0              | 6.2    |
| ML7122              | 0.55   | 2760        | 3.90             | 3.73  | 3.60  | 0.92                   | 70                   | 5.3      | 1.8      | 1.7     | 1.90  | 75                 | 16.0              | 6.3    |
| ML8012              | 0.75   | 2800        | 4.94             | 4.72  | 4.52  | 0.92                   | 75                   | 5.7      | 1.8      | 1.7     | 2.56  | 100                | 25.0              | 8.3    |
| ML8022              | 1.10   | 2800        | 6.75             | 6.45  | 6.18  | 0.95                   | 78                   | 5.6      | 1.8      | 1.7     | 3.75  | 150                | 25.0              | 9.0    |
| ML90S-2             | 1.50   | 2800        | 9.20             | 8.79  | 8.43  | 0.95                   | 78                   | 6.0      | 1.7      | 1.7     | 5.12  | 300                | 40.0              | 12.5   |
| ML90L-2             | 2.20   | 2800        | 12.80            | 12.24 | 11.70 | 0.95                   | 82                   | 6.2      | 1.7      | 1.7     | 7.50  | 300                | 40.0              | 14.0   |
| ML100L1-2           | 3.00   | 2820        | 17.30            | 16.50 | 15.80 | 0.95                   | 83                   | 6.4      | 1.7      | 1.7     | 10.16 | 400                | 55.0              | 20.5   |
| ML112M-2            | 3.70   | 2820        | 21.10            | 20.20 | 19.30 | 0.96                   | 83                   | 6.5      | 1.7      | 1.7     | 12.53 | 400                | 50.0              | 26.0   |
| <b>4 POLES 50Hz</b> |        |             |                  |       |       |                        |                      |          |          |         |       |                    |                   |        |
| ML7114              | 0.25   | 1370        | 2.1              | 2     | 1.93  | 0.9                    | 60                   | 5.2      | 1.8      | 1.7     | 1.74  | 75                 | 10                | 6.3    |
| ML7124              | 0.37   | 1370        | 3.00             | 2.87  | 2.75  | 0.92                   | 61                   | 5.3      | 1.80     | 1.7     | 2.58  | 75                 | 12                | 7.2    |
| ML8014              | 0.55   | 1400        | 3.88             | 3.71  | 3.55  | 0.92                   | 70                   | 5.4      | 1.80     | 1.7     | 3.75  | 100                | 25                | 8.9    |
| ML8024              | 0.75   | 1400        | 5.22             | 4.99  | 4.78  | 0.92                   | 71                   | 5.5      | 1.80     | 1.7     | 5.12  | 150                | 25                | 9.6    |
| ML90S-4             | 1.10   | 1400        | 6.93             | 6.62  | 6.35  | 0.95                   | 76                   | 5.7      | 1.70     | 1.7     | 7.50  | 200                | 35                | 13.0   |
| ML90L-4             | 1.50   | 1400        | 9.20             | 8.79  | 8.43  | 0.95                   | 78                   | 6        | 1.70     | 1.7     | 10.23 | 200                | 40                | 16.0   |
| ML100LA-4           | 2.20   | 1410        | 13.20            | 12.60 | 12.10 | 0.95                   | 80                   | 6.1      | 1.70     | 1.7     | 14.90 | 400                | 50                | 23.0   |
| ML100LB-4           | 3.00   | 1420        | 17.30            | 16.50 | 15.80 | 0.95                   | 83                   | 6.4      | 1.70     | 1.7     | 20.18 | 400                | 50                | 27.0   |
| ML112M-4            | 3.70   | 1430        | 21.10            | 20.10 | 19.30 | 0.96                   | 83                   | 6.5      | 1.70     | 1.7     | 24.71 | 400                | 50                | 35.0   |

\* Defined by Wonder  
All values of current indicated have a tolerance level of  $\pm 3\%$

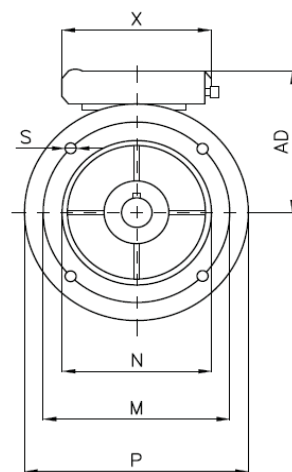
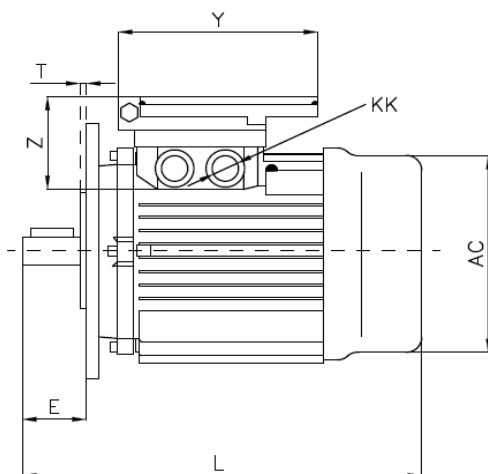
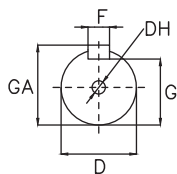
IST = Locked Rotor Current  
IFL = Full Load Current  
TM = Maximum Torque  
TFL = Full Load Torque  
TST = Locked Rotor Torque

# MOUNTING AND OVERALL DIMENSIONS - MY ML SERIES

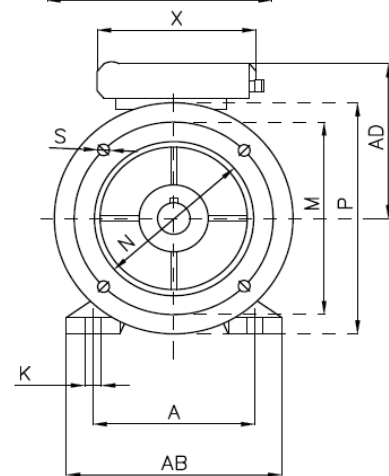
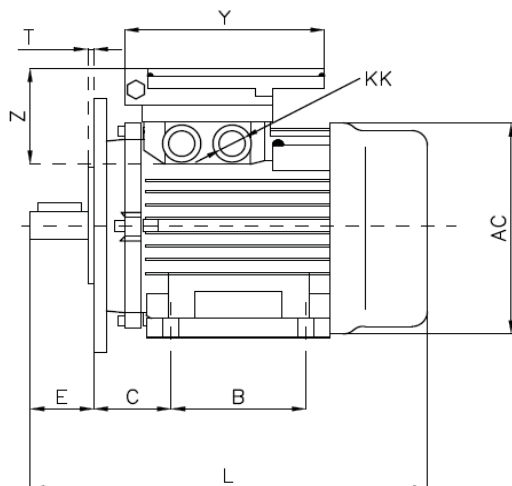
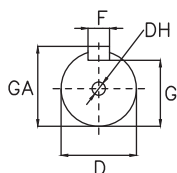
**B3**



**B5**



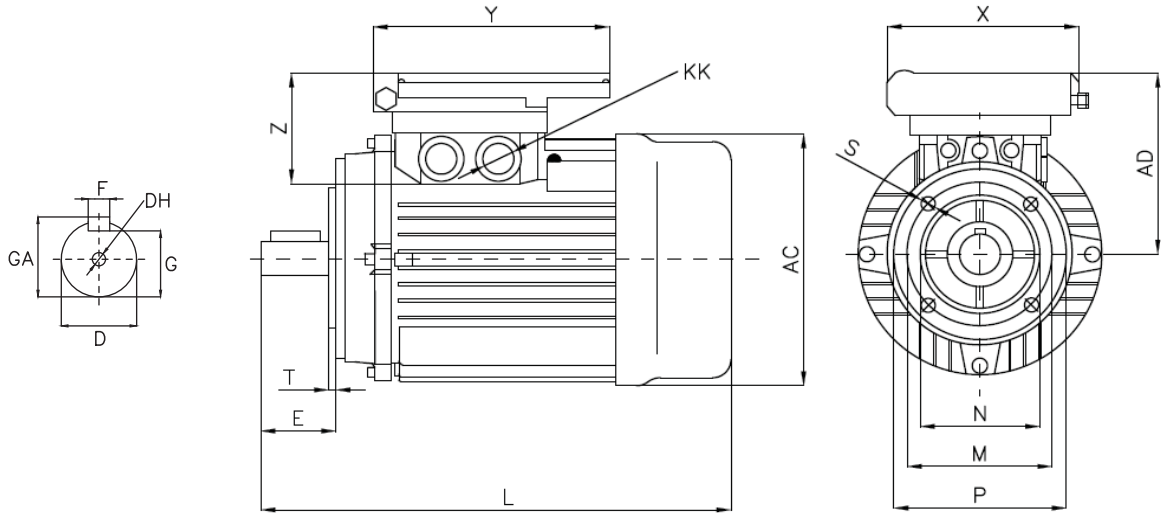
**B35**



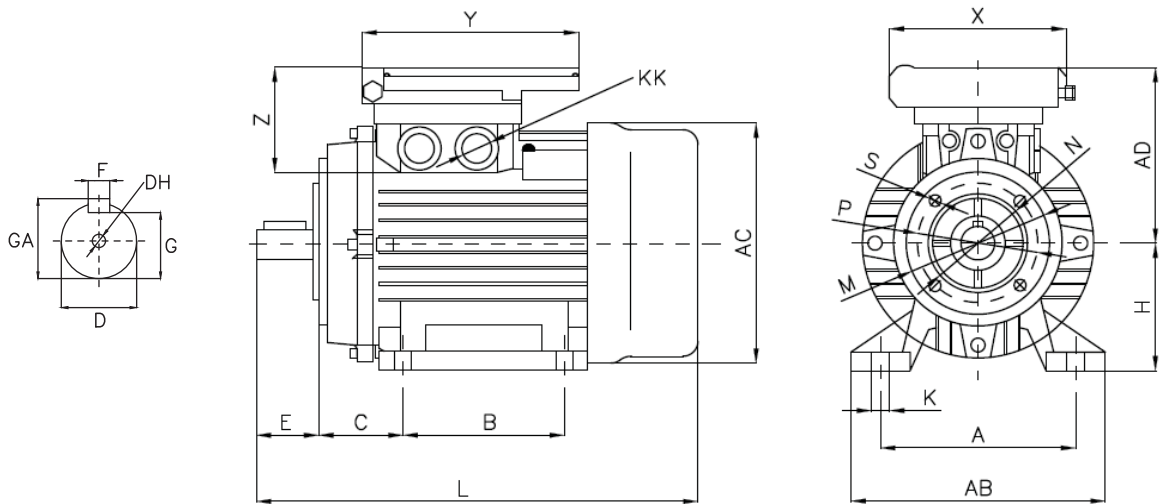
| Frame Size | Flange Size | Mounting Dimensions (mm) |     |     |     |     |    |    |        |    |   |      |     |    |         | Overall Dimensions (mm) |     |     |     |    |     |      |            |  |  |
|------------|-------------|--------------------------|-----|-----|-----|-----|----|----|--------|----|---|------|-----|----|---------|-------------------------|-----|-----|-----|----|-----|------|------------|--|--|
|            |             | A                        | AB  | AC  | AD  | B   | C  | D  | DH     | E  | F | G    | H   | K  | KK      | L                       | M   | N   | P   | S  | T   | GA   | XxYxZ(mm)  |  |  |
| 56         | FF100       | 90                       | 110 | 110 | 96  | 71  | 36 | 9  | M4X12  | 20 | 3 | 7.2  | 56  | 7  | M18X1.5 | 193                     | 100 | 80  | 120 | 7  | 3   | 10.2 | 97X124X46  |  |  |
| 63         | FF115       | 100                      | 122 | 122 | 99  | 80  | 40 | 11 | M4X12  | 23 | 4 | 8.5  | 63  | 7  | M18X1.5 | 218                     | 115 | 95  | 140 | 9  | 3   | 12.5 | 97X124X46  |  |  |
| 71         | FF130       | 112                      | 136 | 138 | 110 | 90  | 45 | 14 | M5X12  | 30 | 5 | 11   | 71  | 7  | M18X1.5 | 251                     | 130 | 110 | 160 | 9  | 3.5 | 16   | 111X128X50 |  |  |
| 80         | FF165       | 125                      | 154 | 157 | 152 | 100 | 50 | 19 | M6X16  | 40 | 6 | 15.5 | 80  | 10 | M20X1.5 | 286                     | 165 | 130 | 200 | 12 | 3.5 | 21.5 | 176X126X68 |  |  |
| 90S        | FF165       | 140                      | 174 | 175 | 158 | 100 | 56 | 24 | M8X19  | 50 | 8 | 20   | 90  | 10 | M20X1.5 | 335                     | 165 | 130 | 200 | 12 | 3.5 | 27   | 176X126X68 |  |  |
| 90L        | FF165       | 140                      | 174 | 175 | 158 | 125 | 56 | 24 | M8X19  | 50 | 8 | 20   | 90  | 10 | M20X1.5 | 350                     | 165 | 130 | 200 | 12 | 3.5 | 27   | 176X126X68 |  |  |
| 100L       | FF215       | 160                      | 194 | 196 | 177 | 140 | 63 | 28 | M10X22 | 60 | 8 | 24   | 100 | 12 | M20X1.5 | 422                     | 215 | 180 | 250 | 15 | 4   | 31   | 176X126X68 |  |  |
| 112M       | FF215       | 190                      | 224 | 220 | 184 | 140 | 70 | 28 | M10X22 | 60 | 8 | 24   | 112 | 12 | M20X1.5 | 434                     | 215 | 180 | 250 | 15 | 4   | 31   | 176X126X68 |  |  |

# MOUNTING AND OVERALL DIMENSIONS - MY ML SERIES

**B14**



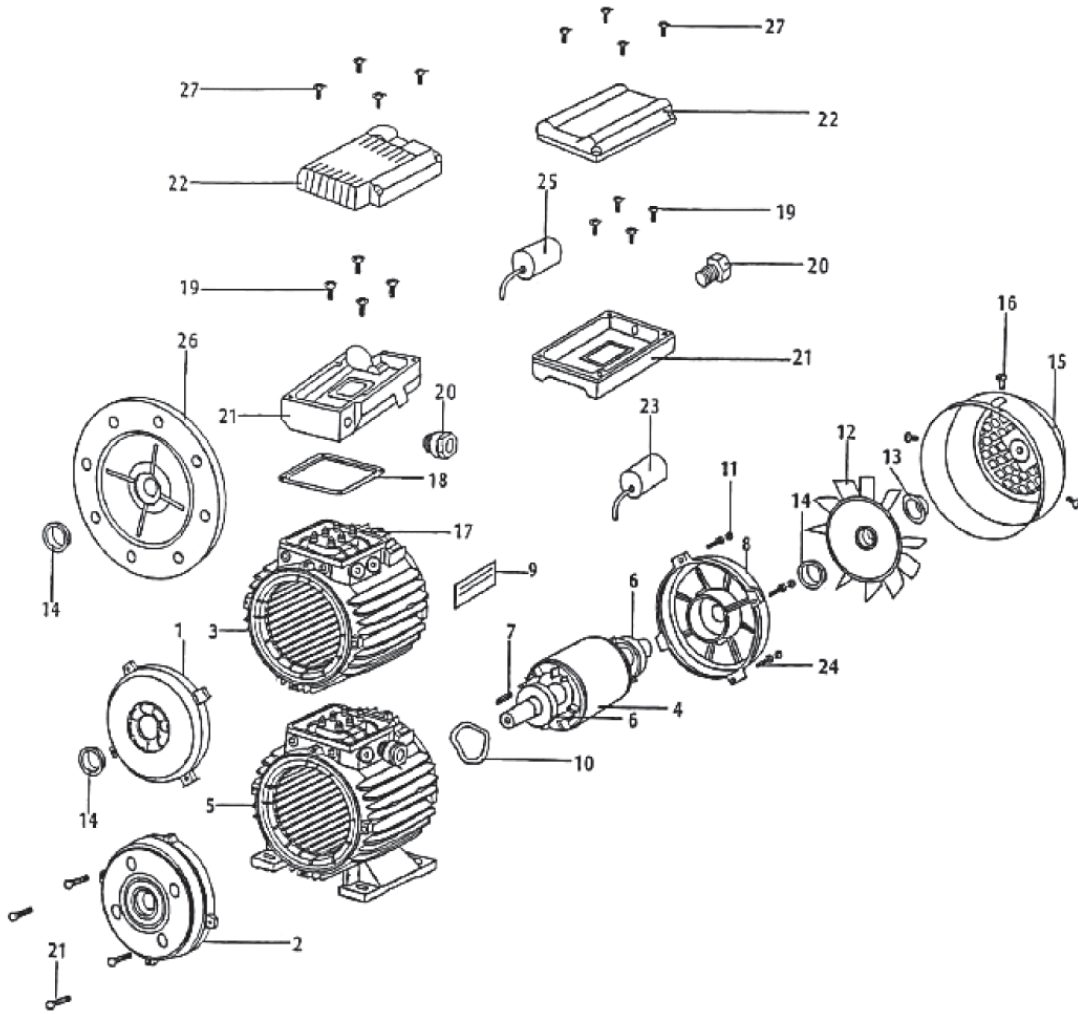
**B34**



| Frame Size | Flange Size | Mounting Dimensions (mm) |     |     |     |     |    |    |        |    |   |      |     |    |         | Overall Dimensions (mm) |     |     |     |    |     |      |            |  |  |
|------------|-------------|--------------------------|-----|-----|-----|-----|----|----|--------|----|---|------|-----|----|---------|-------------------------|-----|-----|-----|----|-----|------|------------|--|--|
|            |             | A                        | AB  | AC  | AD  | B   | C  | D  | DH     | E  | F | G    | H   | K  | KK      | L                       | M   | N   | P   | S  | T   | GA   | XxYxZ(mm)  |  |  |
| 56         | FF65        | 90                       | 110 | 110 | 96  | 71  | 36 | 9  | M4X12  | 20 | 3 | 7.2  | 56  | 7  | M18X1.5 | 193                     | 65  | 50  | 80  | M5 | 3   | 10.2 | 97X124X46  |  |  |
| 63         | FF75        | 100                      | 122 | 122 | 99  | 80  | 40 | 11 | M4X12  | 23 | 4 | 8.5  | 63  | 7  | M18X1.5 | 218                     | 75  | 60  | 90  | M5 | 3   | 12.5 | 97X124X46  |  |  |
| 71         | FF85        | 112                      | 136 | 138 | 110 | 90  | 45 | 14 | M5X12  | 30 | 5 | 11   | 71  | 7  | M18X1.5 | 251                     | 85  | 70  | 105 | M6 | 3.5 | 16   | 111X128X50 |  |  |
| 80         | FF100       | 125                      | 154 | 157 | 152 | 100 | 50 | 19 | M6X16  | 40 | 6 | 15.5 | 80  | 10 | M20X1.5 | 286                     | 100 | 80  | 120 | M6 | 3.5 | 21.5 | 176X126X68 |  |  |
| 90S        | FF115       | 140                      | 174 | 175 | 158 | 100 | 56 | 24 | M8X19  | 50 | 8 | 20   | 90  | 10 | M20X1.5 | 335                     | 115 | 95  | 140 | M8 | 3.5 | 27   | 176X126X68 |  |  |
| 90L        | FF115       | 140                      | 174 | 175 | 158 | 125 | 56 | 24 | M8X19  | 50 | 8 | 20   | 90  | 10 | M20X1.5 | 350                     | 115 | 95  | 140 | M8 | 3.5 | 27   | 176X126X68 |  |  |
| 100L       | FF130       | 160                      | 194 | 196 | 177 | 140 | 63 | 28 | M10X22 | 60 | 8 | 24   | 100 | 12 | M20X1.5 | 422                     | 130 | 110 | 160 | M8 | 4   | 31   | 176X126X68 |  |  |
| 112M       | FF130       | 190                      | 224 | 220 | 184 | 140 | 70 | 28 | M10X22 | 60 | 8 | 24   | 112 | 12 | M20X1.5 | 434                     | 130 | 110 | 160 | M8 | 4   | 31   | 176X126X68 |  |  |

\* Data are subjected to revisions without any prior notice.

# MOTOR SPARE PART LIST/DRAWING - MY ML SERIES



- |    |                            |    |   |
|----|----------------------------|----|---|
| 1  | End shield B3              | 15 | Fan cover                               |
| 2  | Flange B14                 | 16 | Screws for fan cover fixing             |
| 3  | B14, B5 Frame wound stator | 17 | Terminal board complete with components |
| 4  | Rotor with shaft           | 18 | Terminal seal IP55                      |
| 5  | B3 Frame wound stator      | 19 | Screws for terminal box fixing IP55     |
| 6  | Bearings                   | 20 | Cable gland                             |
| 7  | Key                        | 21 | Terminal box IP55 (base)                |
| 8  | Back shield                | 22 | Terminal box IP55 (cover)               |
| 9  | Name plate                 | 23 | Capacitor                               |
| 10 | Spring washer              | 24 | Mounting studs screws                   |
| 11 | Washer                     | 25 | Start capacitor                         |
| 12 | Cooling fan                | 26 | Flange B5                               |
| 13 | Fan clamping bushing       | 27 | Screws for terminal box fixing IP55     |
| 14 | Oil seal                   |    |   |